

### ROAD INDEX

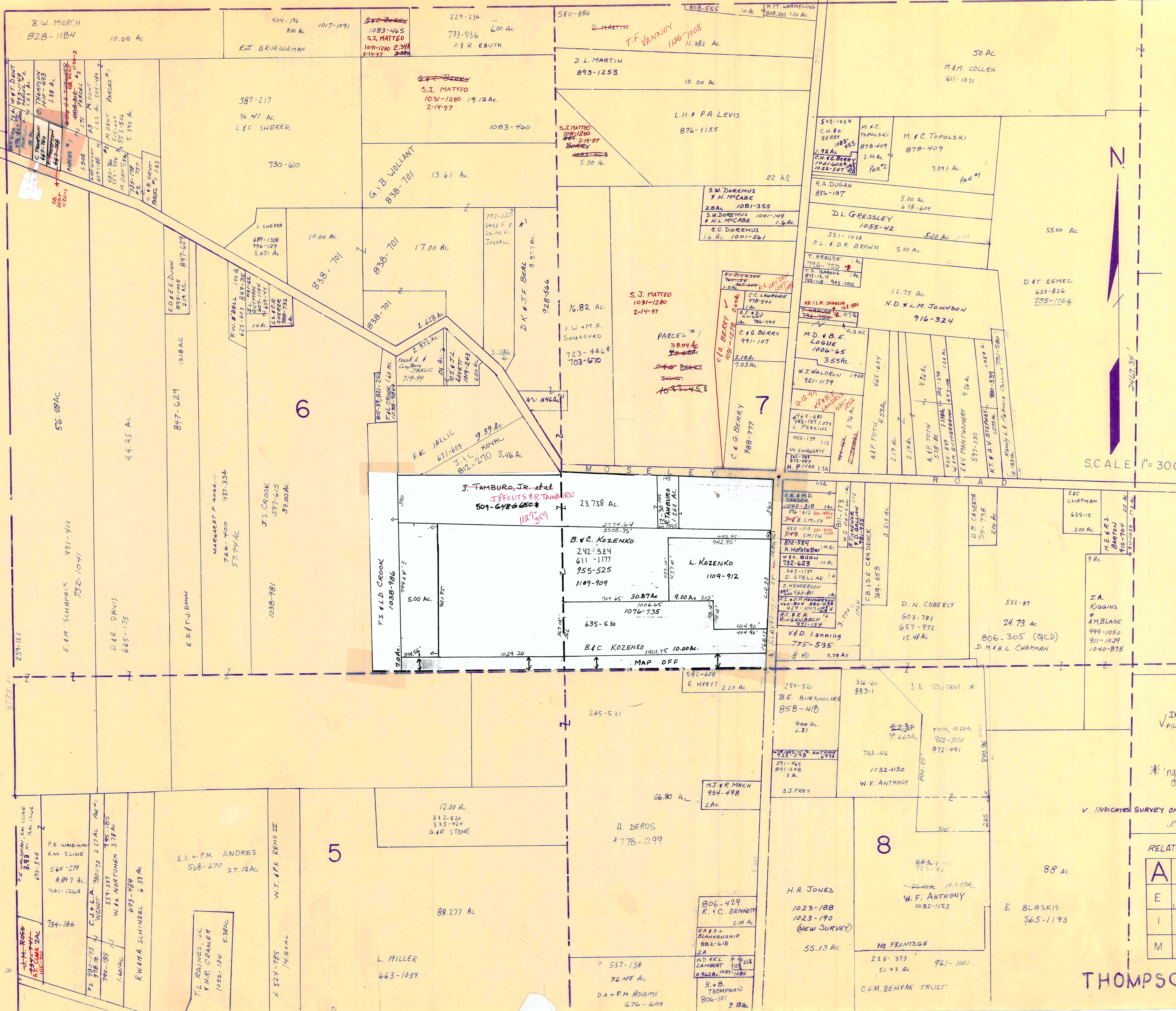
I cont.	R	ROCK CREEK RD. A6-F4
J	S	SHORT RD. F2-F3 SIDLEY RD. F1-F6 STOCKING RD. D1-F1
K	T	THOMPSON RD. A3-F3 TRASK RD. A2-A3
L	U	LEDGE RD. D1-D4 LEROY RD. A3
M	V	MADISON RD. D1-D6 MOSELEY RD. A1-F2
N	W	VALENTINE RD. A4-B4
O	X	WOODCREEK DR. B6 WOODHILL DR. B6
P	Y	PHILIPS RD. F3 PLANK RD. A5-B6
Q	Z	

① LEDGEMONT HIGH SCHOOL  
 ② LEDGEMONT ELEM. SCHOOL  
 ③ THOMPSON METHODIST CHURCH  
 ④ ST. PATRICKS CHURCH  
 ⑤ GRACE EVANGELICAL LUTHERAN CH.  
 ⑥ CEMETERY  
 ⑦ CEMETERY  
 ⑧ MAPLE GROVE CEMETERY  
 ⑨ CEMETERY  
 ⑩ THOMPSON VOL. FIRE DEPT.  
 ⑪ THOMPSON TOWN HALL

**THOMPSON TOWNSHIP**  
 SCALE: 1" = 2000'  
 ROBERT L. PHILLIPS,  
 GEAUGA COUNTY ENGINEER

UNPAVED ROADS  
 PAVED ROADS  
 TOWNSHIP LINE  
 COUNTY LINE

L A K E C O U N T Y



INDICATES SURVEY ON FILE WITH TAX MAP DEPT.

\* Inadequate description

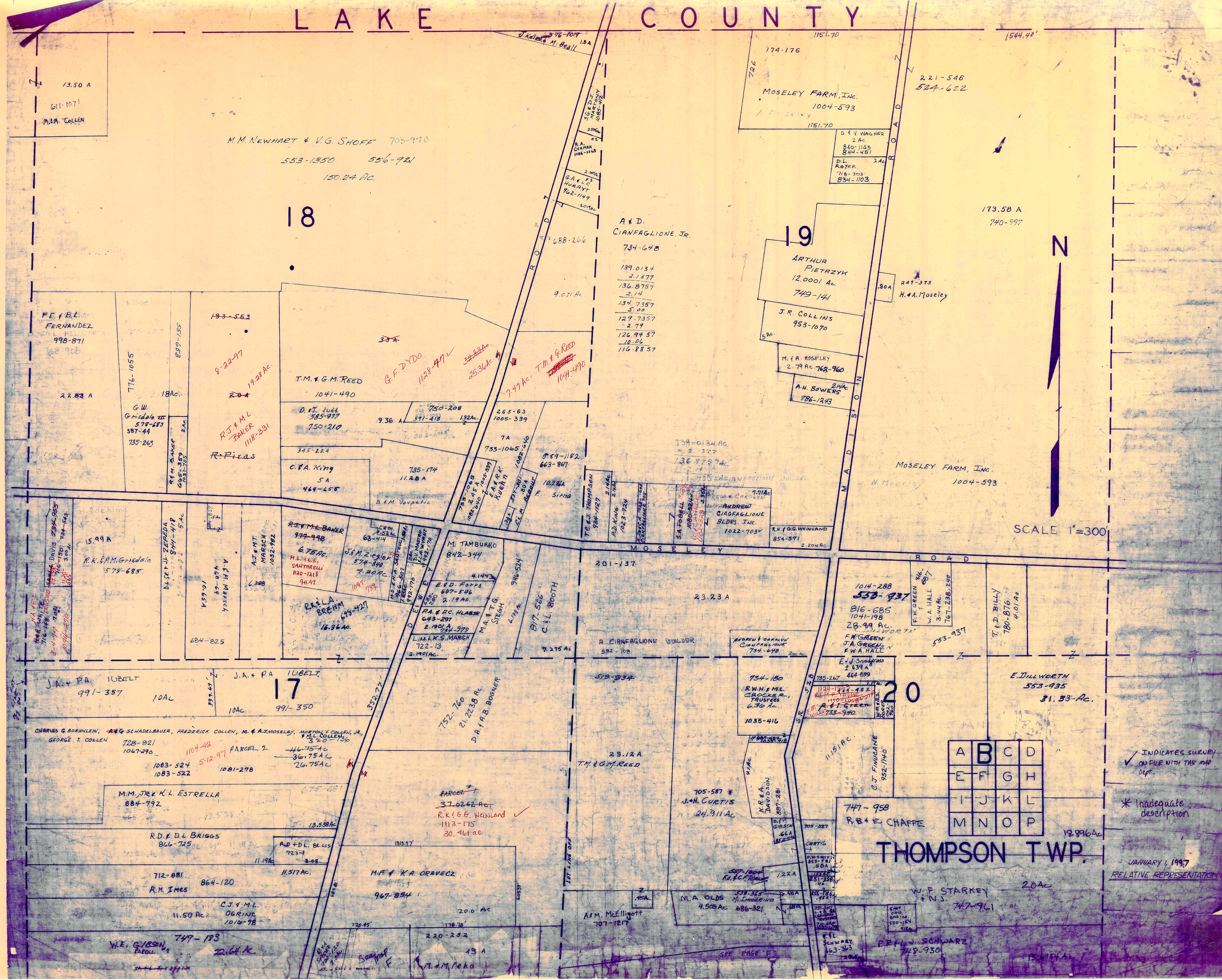
INDICATES SURVEY ON FILE IN TAX MAP DEPT. JANUARY 1, 1997

RELATIVE REPRESENTATION

A	B	C	D
E	F	G	H
I	J	K	L
M	N	O	P

THOMPSON TWP.

# LAKE COUNTY



18

19

20

A	B	C	D
E	F	G	H
I	J	K	L
M	N	O	P

## THOMPSON TWP.

INDICATES SURVEY ON FILE WITH TAX MAP Dept.

\* Inadequate description

JANUARY 1, 1997  
RELATIVE REPRESENTATION

13.50 A  
611-1071  
M.M. COLLEN

M.M. NEWHART & V.G. SHOFF 705-970  
553-1350 556-921  
150.24 AC.

174-176  
MOSELEY FARM, INC.  
1004-593  
1151.70  
D. & V. WAGNER 2 AC.  
840-1143 841-445  
D.L. ROYER 2 AC.  
718-308 834-1103

F.E. & B.L. FERNANDEZ  
998-871  
768-908  
22.83 A

776-1055  
18 AC.  
G.W. GRIEDALE III  
578-683 587-44  
735-263

193-563  
8-22-97  
19.28 AC.  
R.J. & M.L. ZAKER  
118-231  
R. PIRAS

T.M. & G.M. REED  
1041-490  
D. & J. JUDD  
385-977  
750-210  
345-224  
C. & A. KING  
5 A  
464-658

750-208  
391-418 192 AC.  
265-63  
1005-339  
7 A  
733-1065  
589-1182  
663-887  
F. SIMON

735-1035  
2.15 A  
1082-1039  
1082-1046  
311-2701  
1082-1046  
E.M. BERBER

734-1034 AC.  
2.377  
136-8757  
2.14  
134-7357  
5.00  
129-7357  
2.77  
126-9457  
10.06  
116-8857

139-0134  
2.1377  
136-8757  
2.14  
134-7357  
5.00  
129-7357  
2.77  
126-9457  
10.06  
116-8857

ARTHUR PIETRZYK  
12,000 AC.  
749-141  
J.R. COLLINS  
953-1070  
M. & A. MOSELEY  
2.79 AC 762-960  
A.H. BOWERS  
2.44 AC  
886-1243

241-373  
H. & A. MOSELEY

MOSELEY FARM, INC.  
1004-593

15.99 A  
R.K. & P.M. GRIEDALE  
578-685

DL & J. ZEPEDA  
844-418  
5 AC.  
A. & M. MARSH  
490-69  
10.65 A  
684-825

A. & M. MARSH  
1082-982  
6.308

R. & M. BAKER  
974-948  
6.75 AC.  
M.L. & E. SPATARELLI  
1140-1141  
941-97

63-414  
M. TAMBURRO  
842-344  
4.1443  
E.D. FORTO  
607-546  
2.19 AC.  
P.A. & D.C. HLABSE  
643-207  
2.1901 A  
734-979  
L.M. & K.S. MARSH  
722-13  
2.1901 AC.

735-1035  
2.15 A  
1082-1039  
1082-1046  
311-2701  
1082-1046  
E.M. BERBER

734-1034 AC.  
2.377  
136-8757  
2.14  
134-7357  
5.00  
129-7357  
2.77  
126-9457  
10.06  
116-8857

734-1034 AC.  
2.377  
136-8757  
2.14  
134-7357  
5.00  
129-7357  
2.77  
126-9457  
10.06  
116-8857

734-1034 AC.  
2.377  
136-8757  
2.14  
134-7357  
5.00  
129-7357  
2.77  
126-9457  
10.06  
116-8857

734-1034 AC.  
2.377  
136-8757  
2.14  
134-7357  
5.00  
129-7357  
2.77  
126-9457  
10.06  
116-8857

1014-288  
553-937  
816-685  
1041-198  
28.99 AC.  
F.M. GREEN  
J.A. GREEN  
F.W.A. HALL  
E.J. SNOODGRASS  
2.839 A  
735-267 464-899

1014-288  
553-937  
816-685  
1041-198  
28.99 AC.  
F.M. GREEN  
J.A. GREEN  
F.W.A. HALL  
E.J. SNOODGRASS  
2.839 A  
735-267 464-899

1014-288  
553-937  
816-685  
1041-198  
28.99 AC.  
F.M. GREEN  
J.A. GREEN  
F.W.A. HALL  
E.J. SNOODGRASS  
2.839 A  
735-267 464-899

J.A. & P.A. LUBELT  
991-357  
10 AC.

J.A. & P.A. LUBELT  
991-350  
10 AC.

J.A. & P.A. LUBELT  
991-350  
10 AC.

J.A. & P.A. LUBELT  
991-350  
10 AC.

752-760  
21,223.38 AC.  
D.A. & A.B. BOSNER

752-760  
21,223.38 AC.  
D.A. & A.B. BOSNER

752-760  
21,223.38 AC.  
D.A. & A.B. BOSNER

752-760  
21,223.38 AC.  
D.A. & A.B. BOSNER

752-760  
21,223.38 AC.  
D.A. & A.B. BOSNER

752-760  
21,223.38 AC.  
D.A. & A.B. BOSNER

752-760  
21,223.38 AC.  
D.A. & A.B. BOSNER

752-760  
21,223.38 AC.  
D.A. & A.B. BOSNER

752-760  
21,223.38 AC.  
D.A. & A.B. BOSNER

CHARLES G. BOHNLEIN, G. SCHADELBAUER, FREDERICK COLLEN, M. & A. MOSELEY, MORTON Y. COLLEN, JR., W.L. COLLEN  
728-821  
1067-290  
1083-524  
1083-522  
1081-278

1083-524  
1083-522  
1081-278

1083-524  
1083-522  
1081-278

1083-524  
1083-522  
1081-278

1083-524  
1083-522  
1081-278

1083-524  
1083-522  
1081-278

1083-524  
1083-522  
1081-278

1083-524  
1083-522  
1081-278

1083-524  
1083-522  
1081-278

1083-524  
1083-522  
1081-278

1083-524  
1083-522  
1081-278

1083-524  
1083-522  
1081-278

1083-524  
1083-522  
1081-278

M.M. JR. & K.L. ESTRELLA  
884-792

M.M. JR. & K.L. ESTRELLA  
884-792

M.M. JR. & K.L. ESTRELLA  
884-792

M.M. JR. & K.L. ESTRELLA  
884-792

M.M. JR. & K.L. ESTRELLA  
884-792

M.M. JR. & K.L. ESTRELLA  
884-792

M.M. JR. & K.L. ESTRELLA  
884-792

M.M. JR. & K.L. ESTRELLA  
884-792

M.M. JR. & K.L. ESTRELLA  
884-792

M.M. JR. & K.L. ESTRELLA  
884-792

M.M. JR. & K.L. ESTRELLA  
884-792

M.M. JR. & K.L. ESTRELLA  
884-792

M.M. JR. & K.L. ESTRELLA  
884-792

R.D. & D.L. BRIGGS  
866-745

R.D. & D.L. BRIGGS  
866-745

R.D. & D.L. BRIGGS  
866-745

R.D. & D.L. BRIGGS  
866-745

R.D. & D.L. BRIGGS  
866-745

R.D. & D.L. BRIGGS  
866-745

R.D. & D.L. BRIGGS  
866-745

R.D. & D.L. BRIGGS  
866-745

R.D. & D.L. BRIGGS  
866-745

R.D. & D.L. BRIGGS  
866-745

R.D. & D.L. BRIGGS  
866-745

R.D. & D.L. BRIGGS  
866-745

R.D. & D.L. BRIGGS  
866-745

712-881  
R.M. IMES  
864-120

712-881  
R.M. IMES  
864-120

712-881  
R.M. IMES  
864-120

712-881  
R.M. IMES  
864-120

712-881  
R.M. IMES  
864-120

712-881  
R.M. IMES  
864-120

712-881  
R.M. IMES  
864-120

712-881  
R.M. IMES  
864-120

712-881  
R.M. IMES  
864-120

712-881  
R.M. IMES  
864-120

712-881  
R.M. IMES  
864-120

712-881  
R.M. IMES  
864-120

712-881  
R.M. IMES  
864-120

W.E. GIBSON  
749-183

W.E. GIBSON  
749-183

W.E. GIBSON  
749-183

W.E. GIBSON  
749-183

W.E. GIBSON  
749-183

W.E. GIBSON  
749-183

W.E. GIBSON  
749-183

W.E. GIBSON  
749-183

W.E. GIBSON  
749-183

W.E. GIBSON  
749-183

W.E. GIBSON  
749-183

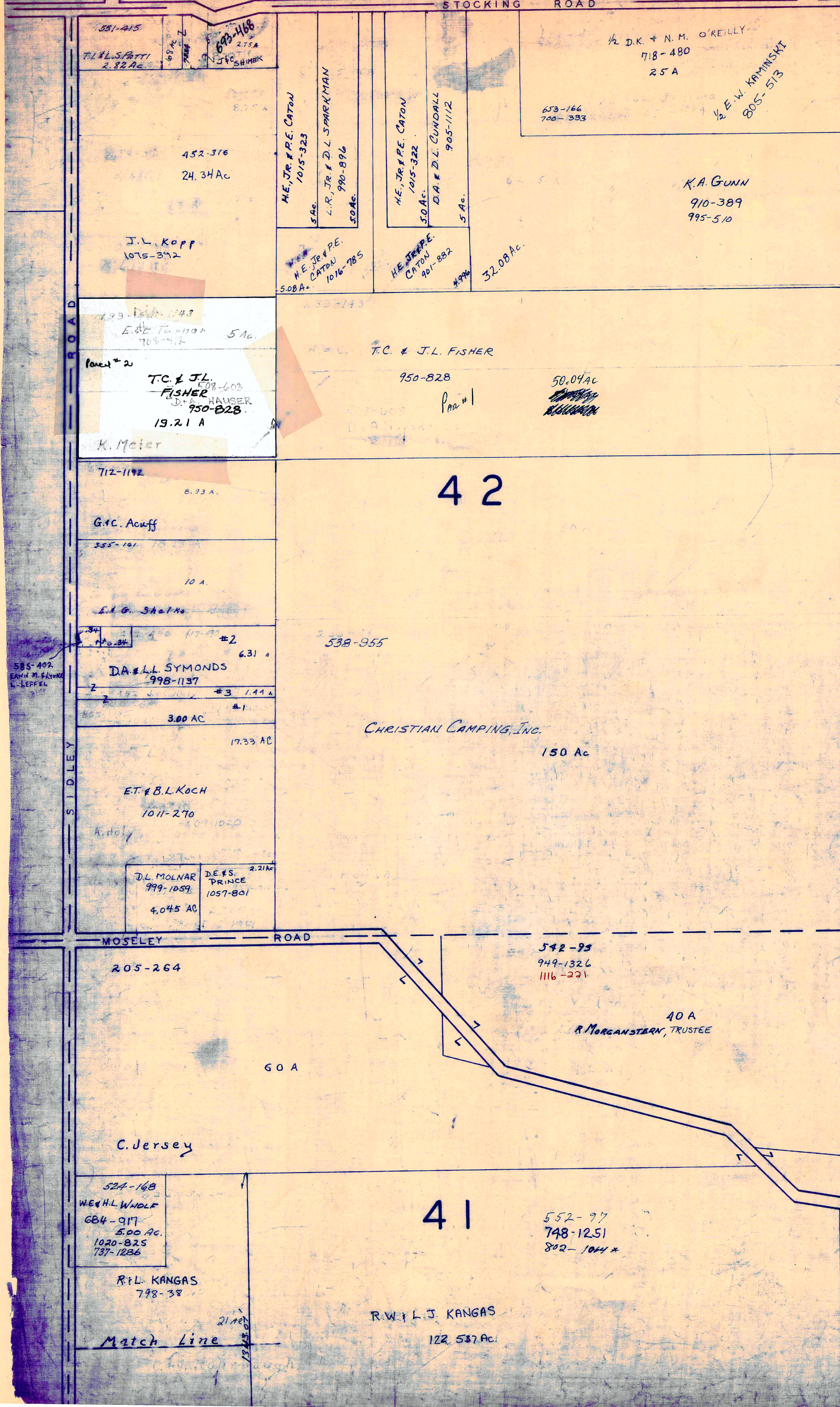
W.E. GIBSON  
749-183

W.E. GIBSON  
749-183

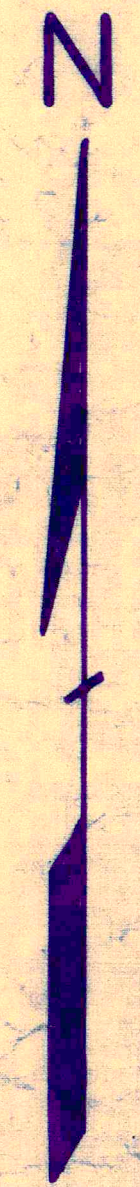


L A K E C O U N T Y

STOCKING ROAD



A S H T A B U L A C O U N T Y



SCALE 1" = 300'

JAN 1, 1997

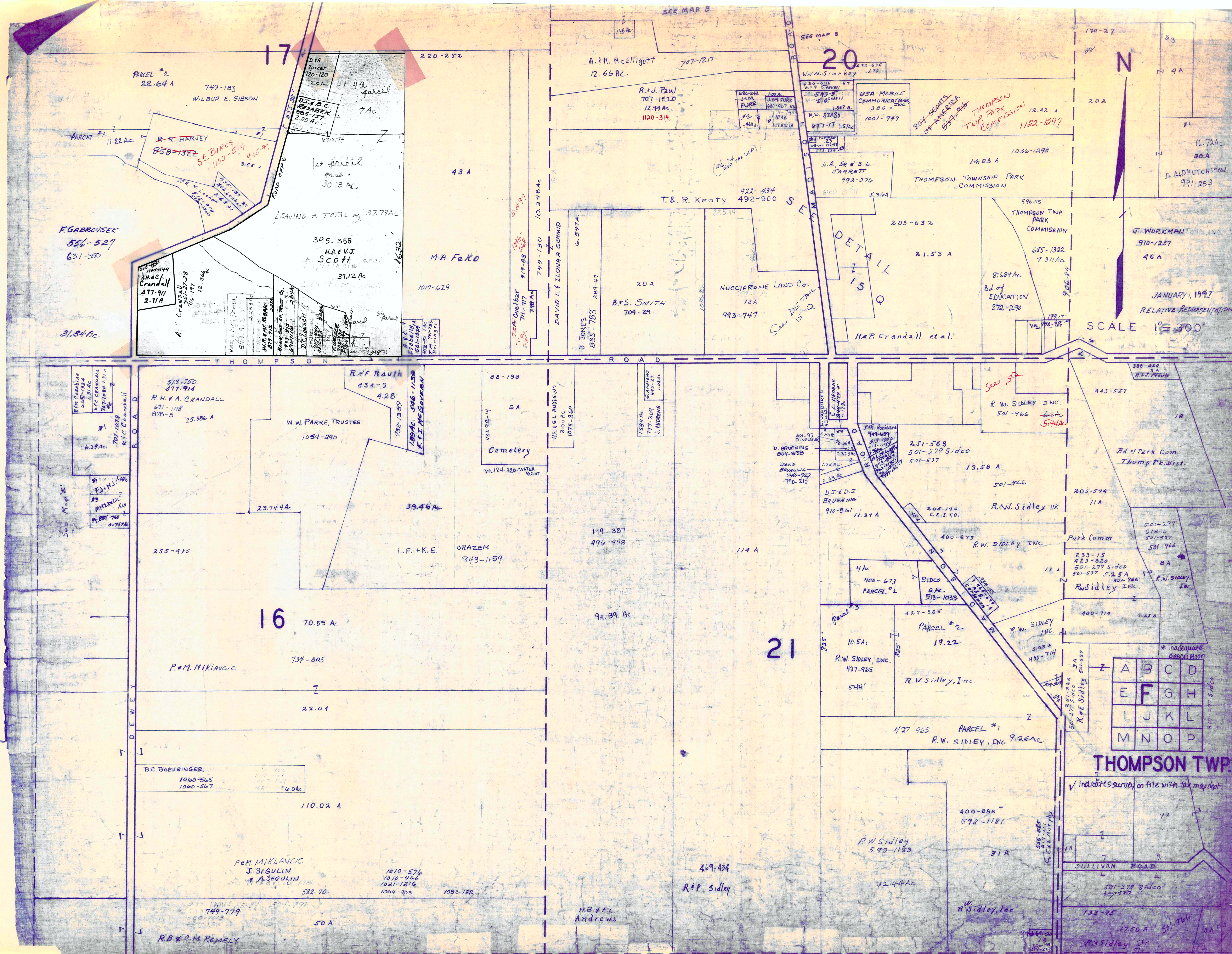
RELATIVE REPRESENTATION

Indicates survey on file with tax map dept.

A	B	C	D
E	F	G	H
I	J	K	L
M	N	O	P

THOMPSON TWP  
Match Line





PARCEL #2  
22.64 A  
749-183  
WILBUR E. GIBSON

F. GABROVSEK  
556-527  
637-350

31.34 Ac

R. R. HARVEY  
858-1322  
S.L. BIROS  
1100-514  
415-91

R. H. & A. CRANDALL  
477-911  
2.11 A

D. H. Spricer  
720-120  
12.0 A

D.J.K.B.C. KEABEK  
885-157  
2.00 A

1st parcel  
30.13 Ac

395-358  
H.A. & V.J. Scott  
39.12 Ac

M.A. FEXO

1017-629

A.H. McElligott  
12.66 Ac.  
707-1217

R. J. Paul  
707-1220  
12.44 Ac.  
1120-34

686-264  
J.M. FURR  
1.00 Ac

1002 Ac  
J.M. FURR  
680-907  
1.10 Ac

1.567 Ac  
M.W. STABO  
677-77  
1.57 Ac

4.4 Ac  
S.E. & S.L. JARRETT  
992-576

20 A  
B.F.S. SMITH  
704-29

NUCCARONE LAND CO.  
13A  
993-747

DETAIL  
ZIS  
Q

USA MOBILE COMMUNICATIONS  
3.86 A

1001-747

14.03 A

203-632

21.53 A

H. & P. CRANDALL et al.

BOY SCOUTS OF AMERICA  
857-946

THOMPSON TWP. PARK COMMISSION  
12.42 A  
1122-1897

1036-1298

THOMPSON TWP. PARK COMMISSION

8.689 Ac  
Bd. of EDUCATION  
272-290

9.06 Ac

12.42 A

1036-1298

THOMPSON TWP. PARK COMMISSION

596.45

THOMPSON TWP. PARK COMMISSION

685-1322  
7.311 Ac

199.17

501-966

R.W. SIDLEY INC.

501-966

R.W. SIDLEY INC.

501-966

R.W. SIDLEY INC.

501-966

R.W. SIDLEY INC.

501-966

R.W. SIDLEY INC.

501-966

R.W. SIDLEY INC.

501-966

SCALE 1"=300'

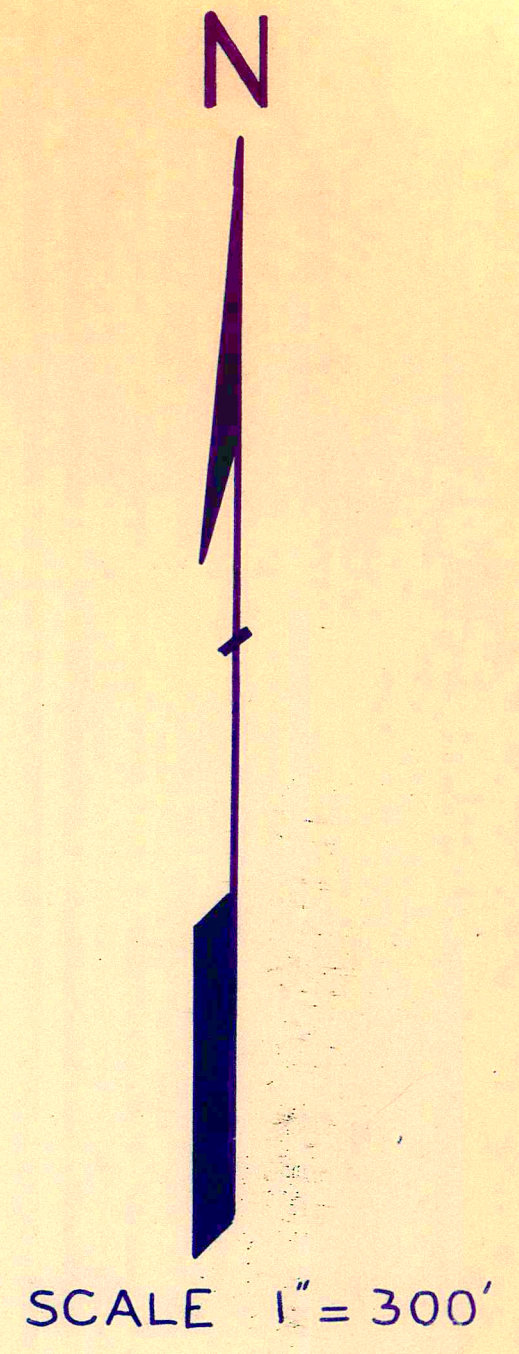
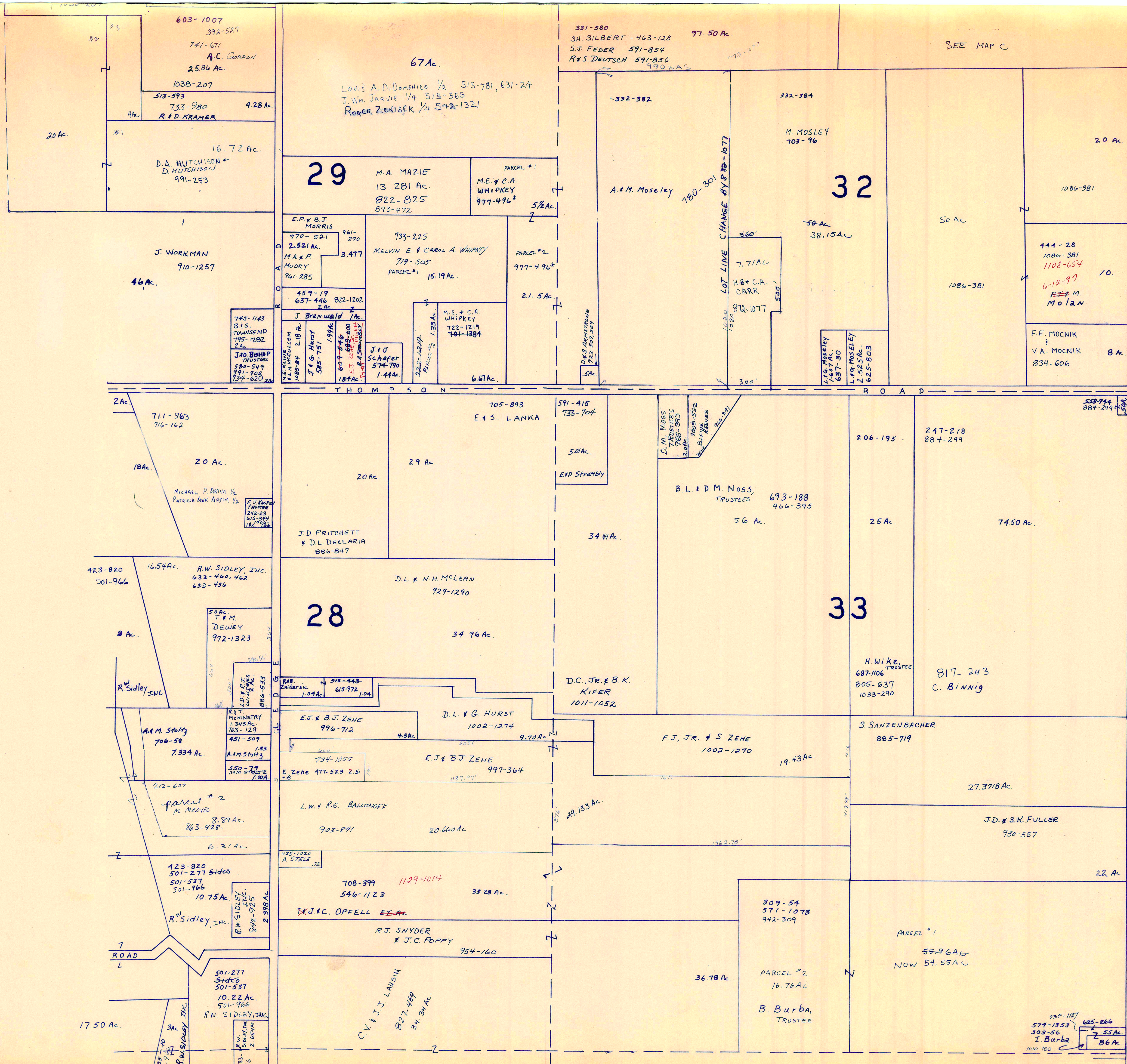
THOMPSON TWP.

✓ indicates survey on file with tax map dept.

A	B	C	D
E	F	G	H
I	J	K	L
M	N	O	P

17.50 A

R.W. SIDLEY INC.



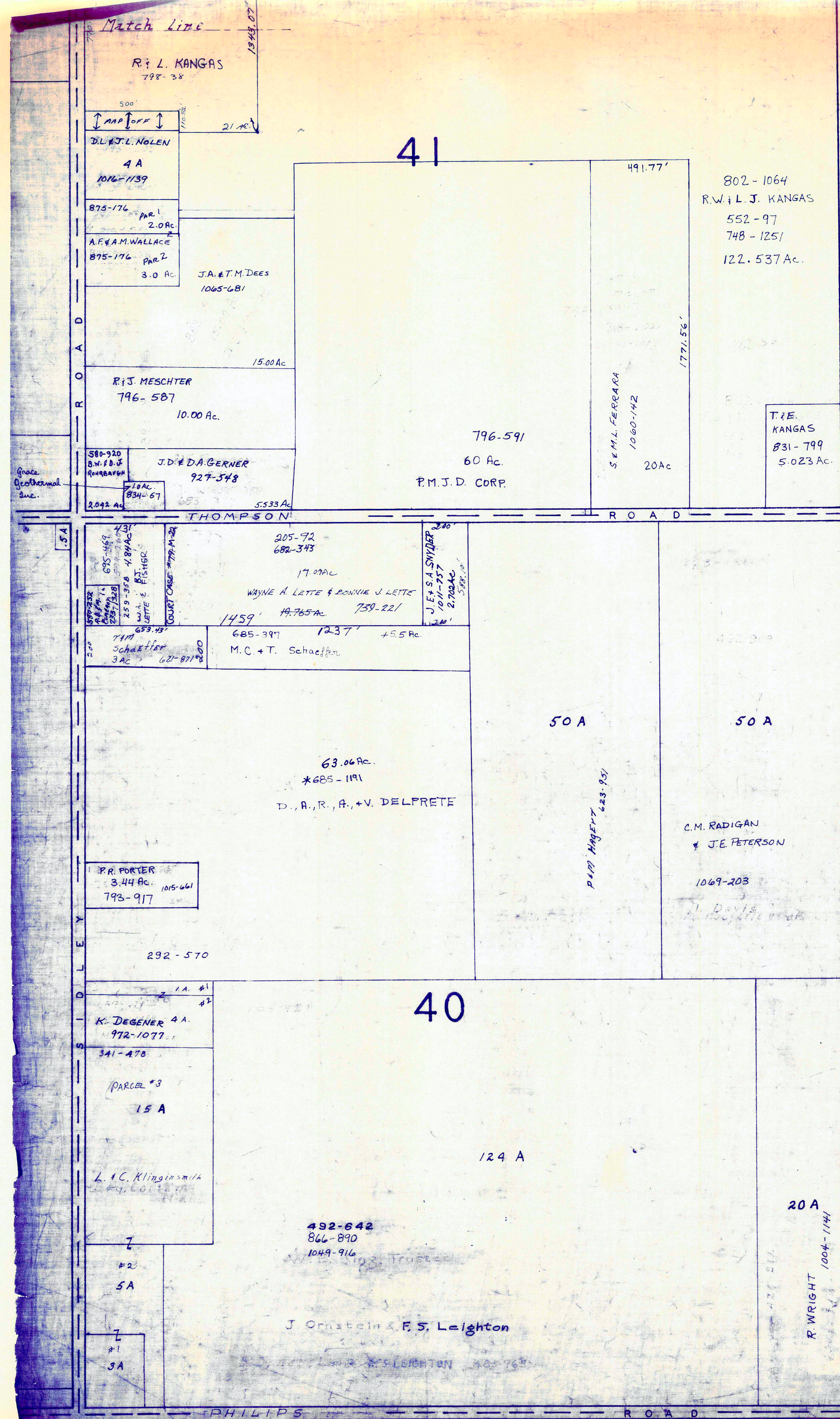
A	B	C	D
E	F	G	H
I	J	K	L
M	N	O	P

**THOMPSON TWP.**

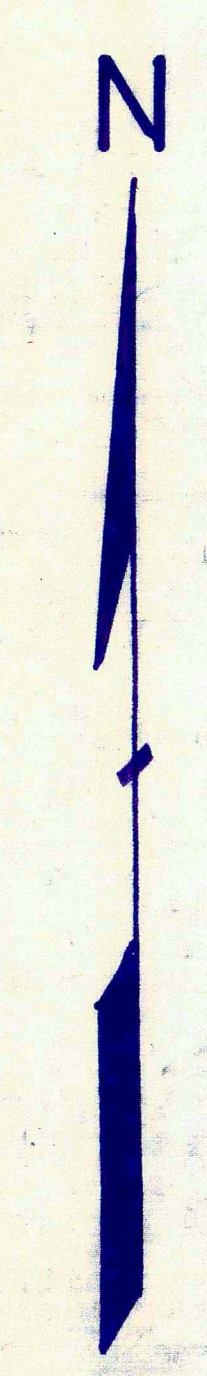
JANUARY 1, 1997  
RELATIVE REPRESENTATION

\* Inadequate description

✓ 5-8-1996 SURVEY FILED IN TAX MAP DEPT.



Match Line



SCALE 1" = 300'

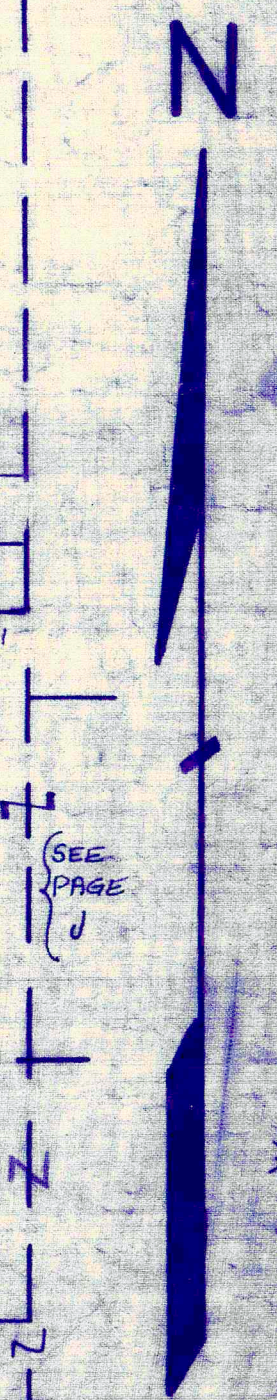
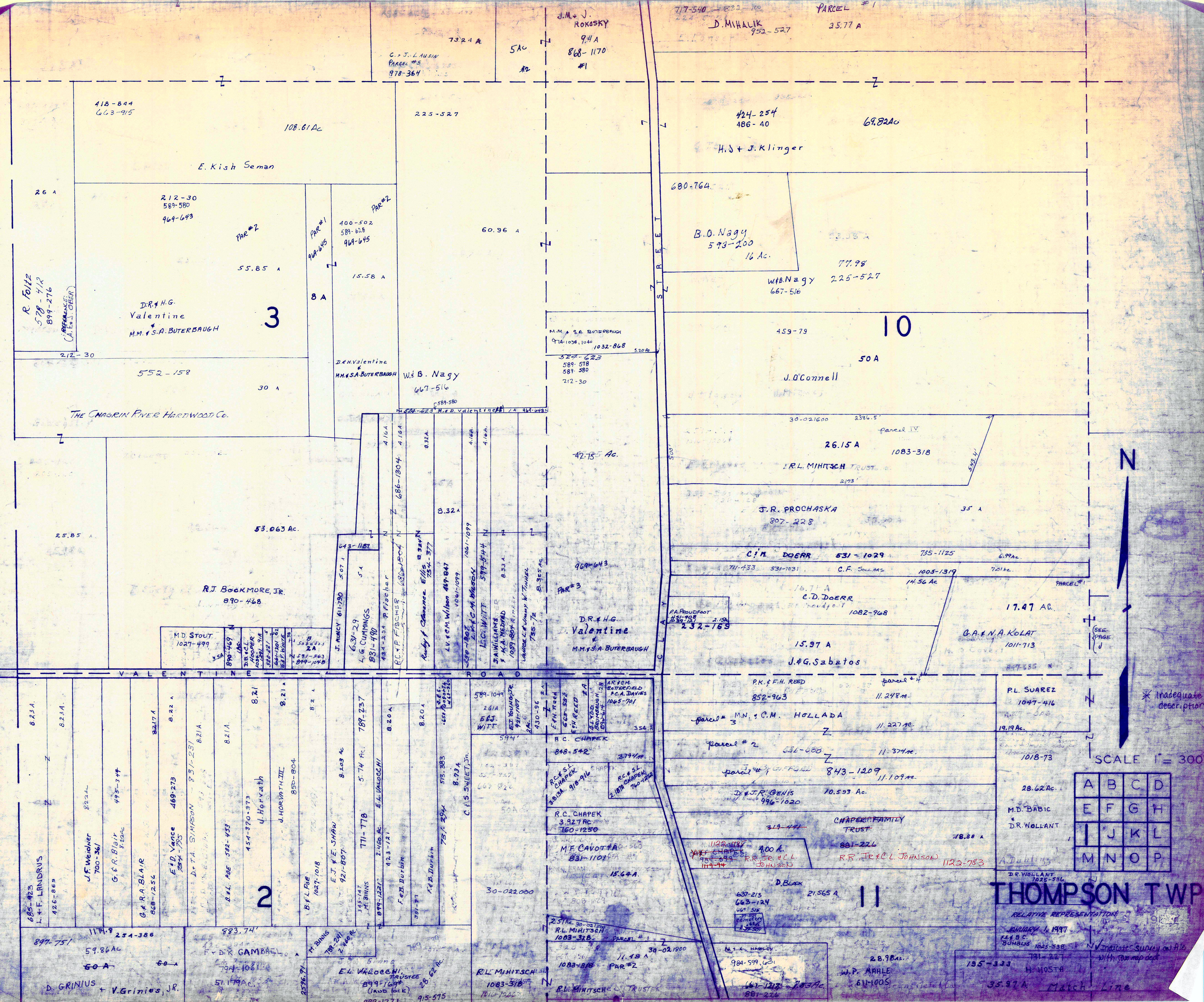
JANUARY 1, 1997  
 RELATIVE REPRESENTATION  
 V INDICATES SURVEY ON FILE IN TAX MAP DEPARTMENT

A	B	C	D
E	F	G	H
I	J	K	L
M	N	O	P

THOMPSON TWP

L A K E C O U N T Y

L A K E



A	B	C	D
E	F	G	H
I	J	K	L
M	N	O	P

**THOMPSON TWP**

RELATIVE REPRESENTATION

JANUARY 16, 1993

RE: B.C. BUNNING 1025-538

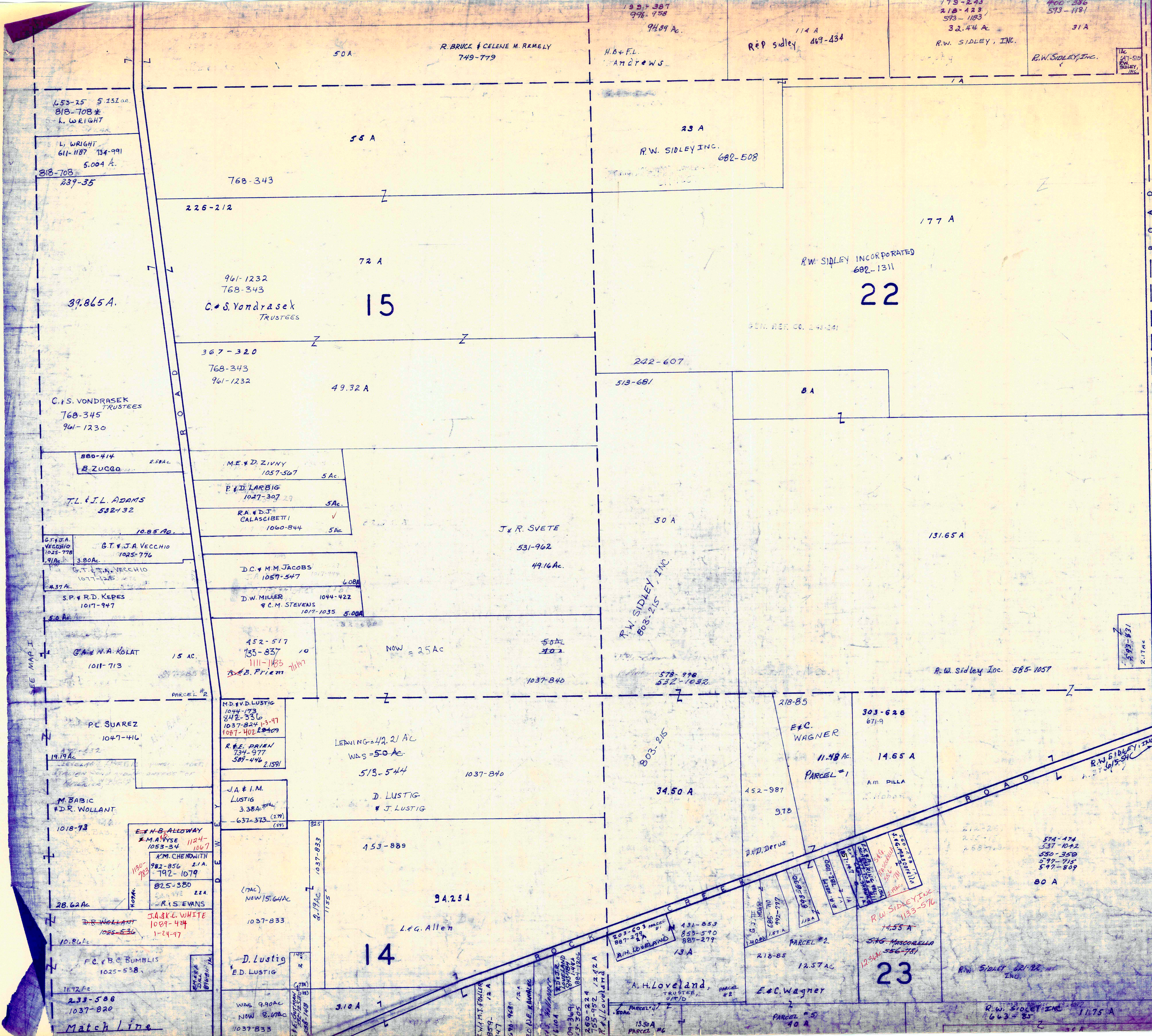
185-333 H. HOSTA

28.90 Ac. W.P. ARBLE 611-1005

35.97 A Match Line

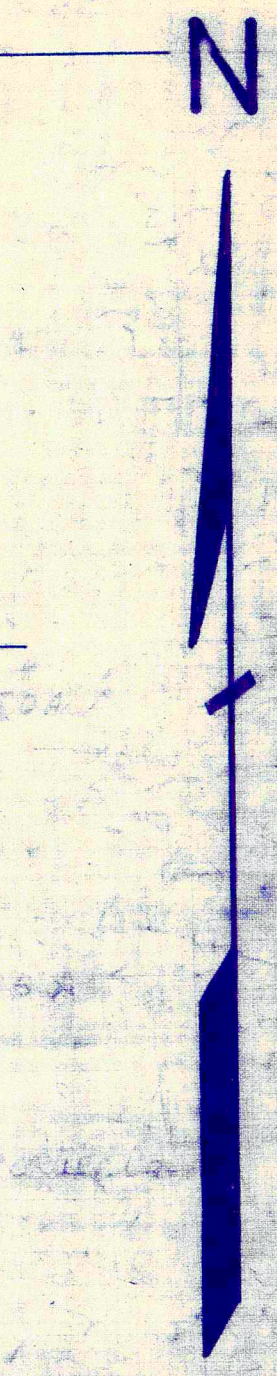
\* Inadequate description

Indicates Survey on A/B with boundary



SEE MAP I

Match Line



SCALE 1" = 300'

\* Inadequate description  
 ✓ indicates survey or Acre with tax map def.

A	B	C	D
E	F	G	H
I	J	K	L
M	N	O	P

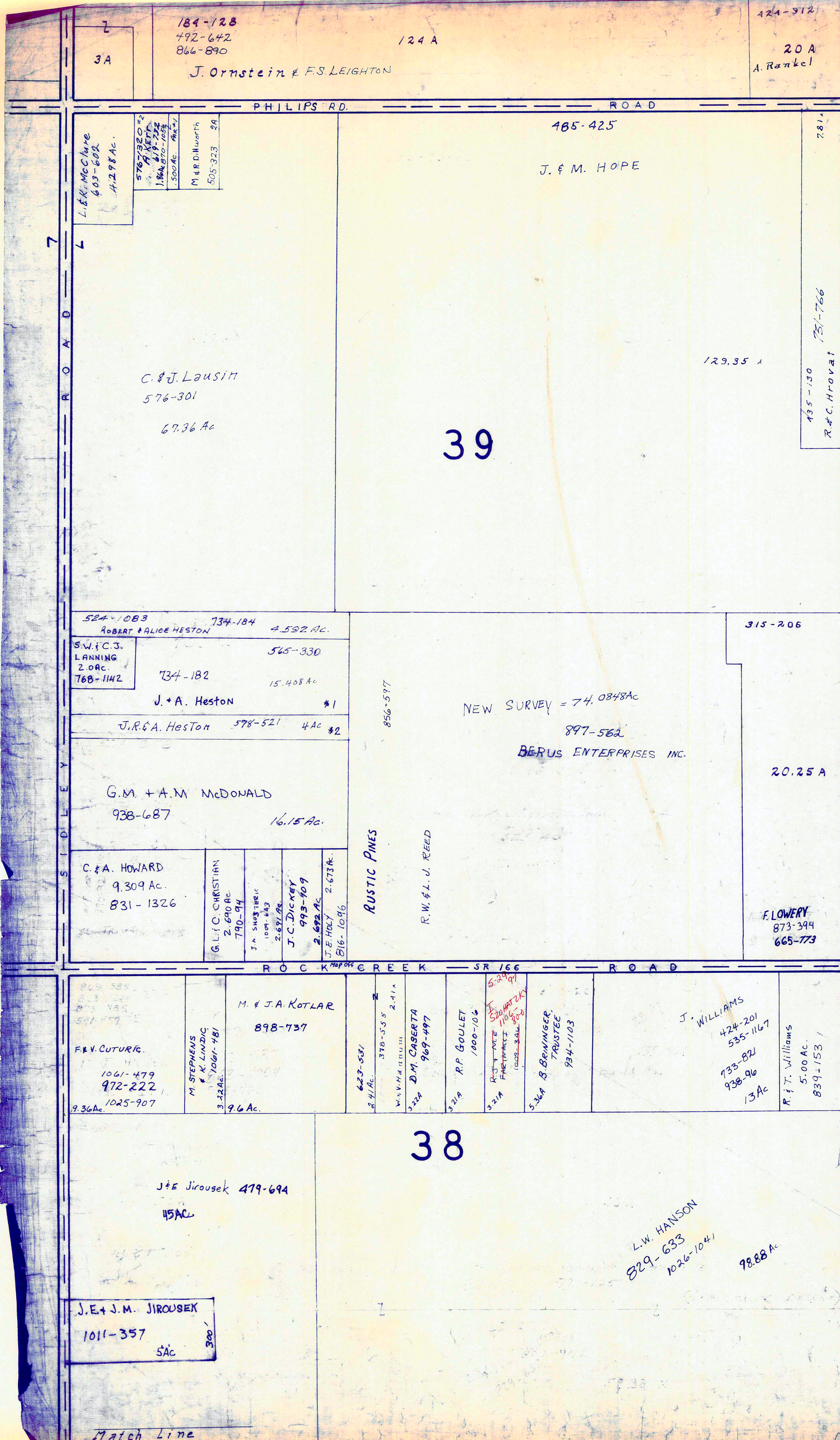
THOMPSON TWP

JAN. 1, 1997

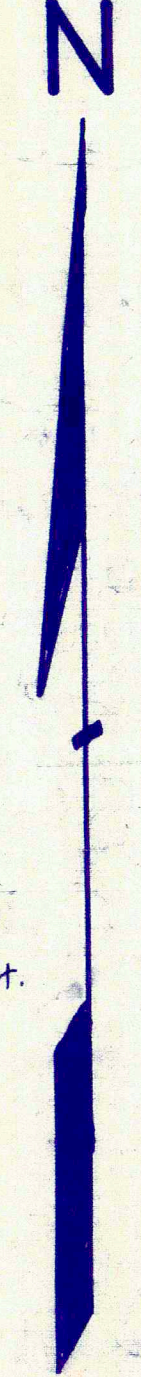
RELATIVE REPRESENTATION

Match Line





ASH T A B U L A C O U N T Y



\* Inadequate description  
 ✓ indicates survey on file with tax map dept.

SCALE 1" = 300'

JAN 1, 1997  
 RELATIVE REPRESENTATION

A	B	C	D
E	F	G	H
I	J	K	L
M	N	O	P

THOMPSON TWP.  
 Match Line





Match Line

Match Line

423-820  
501-277 Sidco  
501-537

26

501-277 Sidco  
501-537

35

38

R. Sidley

165 A

50 A

86-25 A

ANTON CUTURIC 947-106

A. CUTURIC  
947-109

ROAD

M.L. RAMSEY  
1016-906

90 A

49.83 A

603-125  
899-276  
R. FOITZ

D.J. II & J.M. GILKERSON  
874-1076  
944-94  
944-89

944-87 T.J. & J.L. BRININGER  
6.99 AC. 881-1244  
M.P. BRININGER  
891-1242 P.N. LANDRUS  
5.037A

~~591-453~~  
GIS UNLIMITED, LLC.  
1109-190

254-937  
722-557

37.81A  
B. & D.A. DUEE 707-864  
N.E. & A.C. DINGERS 872-822 2.388 AC.  
3.381 AC. 907-864

~~54 A~~ 95.44 AC.

8.63 A  
954-142  
16.35 A  
Kennemetal Rod & Gun Club  
300-149 798-380 795-1006  
N.J. DOMUKAITIS 9.62 A  
556-637  
G. & J.L. GOEHRING 9.62 A

J. ROTH  
672-807

131.50 AC.

N

224-6  
234-169  
144.45'  
24.13 A  
907-523  
K.M. SUSMAN

711-931

60.92 A

36

20 A

427-814  
661-711  
(TOTAL AC. 172 TAX DUPLICATE)

M. 2175A  
SUSMAN  
709-1019

A.L. JUARS  
C.L. ANDERSON  
K. TUTTLE  
819-266  
906-1178

106.50 A

591-771 2.35 A  
S.A. BONICK  
D.A. & S. BEVERIDGE  
705-341

424-583 \*

25

711-931

74.59 A

356-316 5 A

35 A

J. Yelcho

P. TICEL  
752-210  
PAR #2  
3.21 A

752-210 \* 43.08 AC.  
PETER R. TICEL

R.F.S. TUTTLE  
701-1393  
5.174 AC.

S. WALSH  
& D. ZINGALE  
1041-772 1099-964 5.0 AC.

F. & S. ZINGALE  
613-877 623-153 6.48 AC.

S.W. & P.L. GEALY  
899-1147  
3.025 AC.

S. 927 AC.  
D. B. WHITE  
673-930

P.R. TICEL  
801-1285  
R.M. & C. ZERECHECK  
1012-203  
1.027 AC.  
KARL L. TORLON  
868-174

M. Gurich 3/4 Int.  
R. Gurich 1/4 Int.

J.C. COLLIER  
1042-951  
20.00 AC.

239-440 5 A  
H. KIMAK  
809-1145

W. & M. BOWER

67-272  
661-711 \*  
EXCEPTING  
3.50 AC. 88-43  
11.50 AC.

A	B	C	D
E	F	G	H
I	J	K	L
M	N	O	P

THOMPSON TWP.

RELATIVE REPRESENTATION  
\* Inadequate description  
INDICATES SURVEY ON FILE WITH TAX MAP DEPT.

SCALE 1" = 300'  
JAN 1, 1997

MONTVILLE TOWNSHIP

MADISON ROAD

SOLEY ROAD

BURROWS ROAD

Match Line

Match Line

38

S.C. & V.A. THORNHILL  
1031-443  
L.H. HANSON 1113-935 7-21-97

L.W. HANSON  
1026-1041 829-633

J. Stocker  
L.W. HANSON 1118-1312

603-125  
899-276  
R. FOLTZ

T.E. & M.A.  
STOCKER  
989-399

parcel # 2  
parcel # 2  
459-355

J. STOCKER

812-911  
1091-1093  
T.W. SEBIAN  
989-186  
J.W. & B.L.  
TRUMAN

Parcel # 3  
J. STOCKER

14.191 Ac  
Parcel # 5 459-355

A.C. & D.B.  
MALDONADO  
1109-1093  
1107-1257  
4-276

C.W. & B.A. CLEMSON

LEGENDARY  
PROPERTIES  
LTD.

37

85.09 Ac.  
B.A. CLEMSON  
C.W. CLEMSON 1100-211

859-399  
G. 952-1854  
EISENHART  
2-28-92

491-654  
1110-1035

5.96 Ac.  
496-157 1110-1035

6.942 A  
J. Brazofsky

J.H. DOWLER, et al  
H. & A. HOUSER 36.88 Ac.

F.M. ROTUNDA JR.  
608-702

4.79 Ac.  
425-955  
J. BRAZOFSKY

512-628  
S.R. & M.E. KING  
947-663

M. Smialek  
A. Smialek  
744-745

1132-1229  
12-5-97

A S H T A B U L A C O U N T Y



JAN 1, 1997

\* Inadequate description  
INDICATES SURVEY ON FILE WITH TAX MAP DEPT.

SCALE 1" = 300'

RELATIVE REPRESENTATION

A	B	C	D
E	F	G	H
I	J	K	L
M	N	O	P

THOMPSON TWP

MONTVILLE TWP

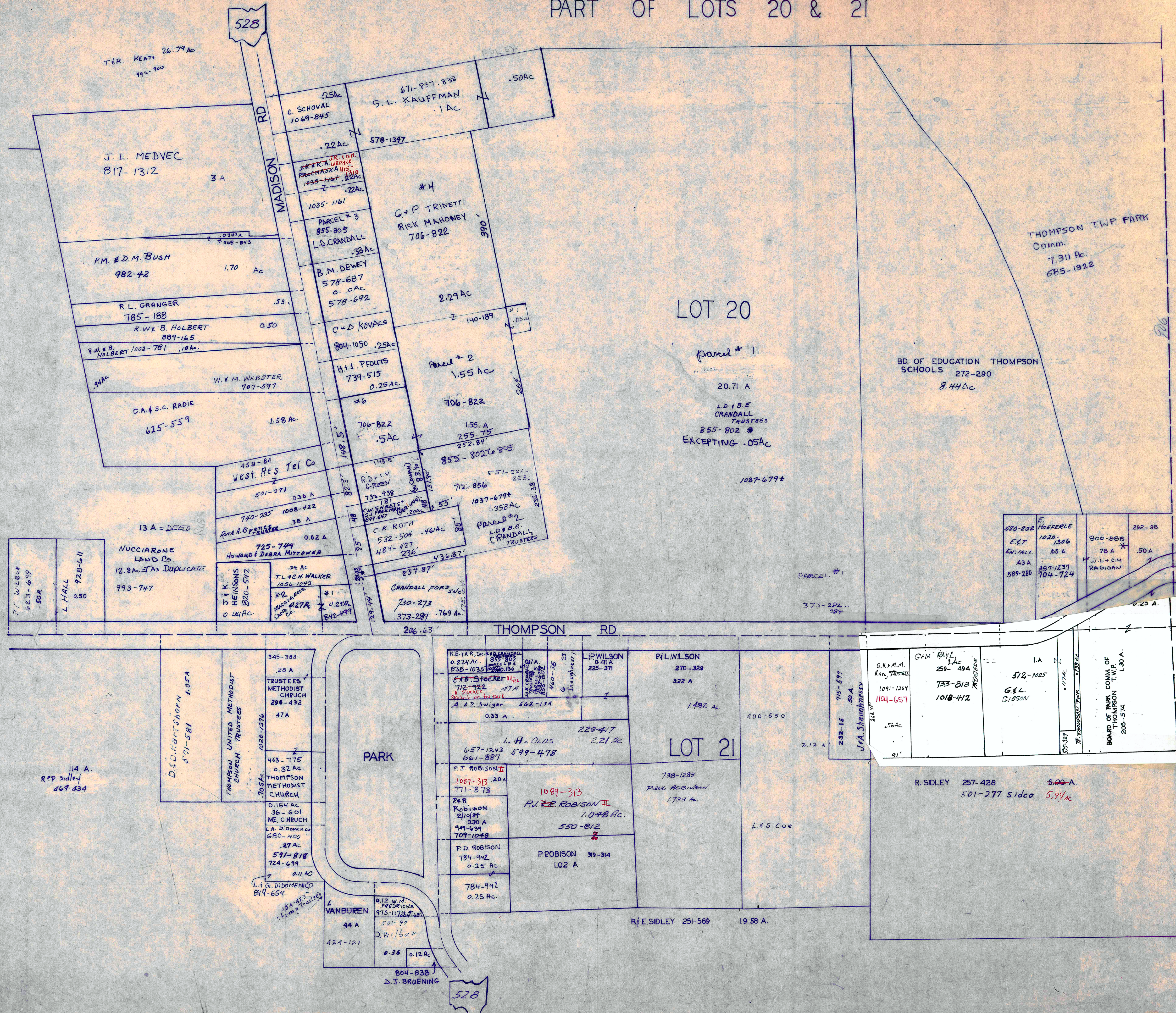
BURROWS ROAD

ROAD

SIDLEY

# THOMPSON TP

PART OF LOTS 20 & 21



Thompson

SCALE 1 IN. = 100 FT.

LOT 28

JANUARY 1, 1997  
RELATIVE REPRESENTATION

\* inadequate description  
✓ INDICATES SURVEY IN FILE WITH TAX MAP DEPT.

15 Q